



ROVEMA

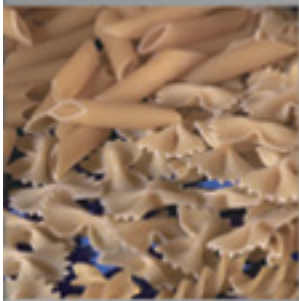
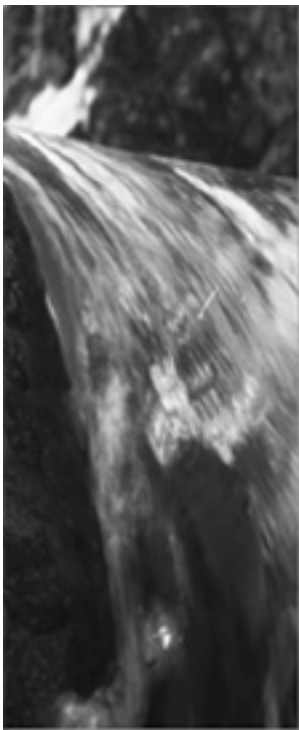
VDD Volumetric Cupfiller

The reliable way of product filling



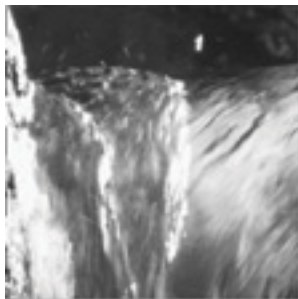
Through many years of experience in filling technology, the strength of the VDD lies primarily in the optimized design of its filling system which is specially adapted to individual product characteristics. Its standard stainless steel construction makes the VDD suitable for any application.

- Cup sets in product specific execution
- Programmable, motorized cup height adjustment to vary the discharge volume
- Gas flushing systems
- Aggregate for residual oxygen analyzer
- Tendency control
- Special wiper units
- Protective housing to ensure dust-free dosing





ROVEMA



ROVEMA
Verpackungsmaschinen GmbH
Industriezone 1
D 35461 Feemelde
Tel: ++49-641-499-0
Fax: ++49-641-499-212
Email: info@rovema.de
http://www.rovema.de

ROVEMA
Endverpackungstechnik GmbH
Industriezone 1
D 35461 Feemelde
Tel: ++49-641-499-0
Fax: ++49-641-499-212
Email: info@rovema.de
http://www.rovema.de

ROVEMA
Verpackungsmaschinen Sp. z o.o.
ul. Odrycka 31
PL 02-506 Warszawa
Tel: ++48-22-844 7748
Fax: ++48-22-8549446
Email: postmaster@rovema.com.pl

ROVEMA Iberica S.A.
C/ Mar d'An C/da 5,
Apolo Common NO 15
E 08181 Sant Joanet (Barcelona)
Tel: ++34-93 7 15 46 03
Fax: ++34-93 7 15 46 38
Email: rove@mail.rovema.es

ROVEMA
Packaging Machines L.P.
650 Hurricane Shoals
Road NW Lawrenceville,
GA 30045 U.S.A.
Tel: ++1-770-513-9604
Fax: ++1-770-513-0814
Email: rove@mail.rovema.com
http://www.rovema.com

ROVEMA
Packaging Machines Limited
5A Alton House Office Park
Gateshead Way, Aylestone
Bucks HP 19 3JU,
United Kingdom
Tel: ++44-1296-48 22 36
Fax: ++44-1296-48 73 34
Email: sales@rovema.co.uk

ROVEMA Benelux bv
Dydenberg 9, 4902 TT
Postbus 4217, 4800 CJ
NL, Oostbeemster
Tel: ++31-162-576-464
Fax: ++31-162-576-465
Email: sales@rovema.nl

ROVEMA Italia srl
Viale PD Vigliani, 21
120148 Milano
Tel: ++39-02-48011745
Fax: ++39-02-48008239
Email: rti@rovema-italia.it

ROVEMA Asia
40, Albert Street #09-05
Albert Complex
1899-65 Singapore
Tel: ++65-339-0126
Fax: ++65-339-2209
Email: info@rovema.com.sg

...and Sales and Service centers
worldwide

The principle

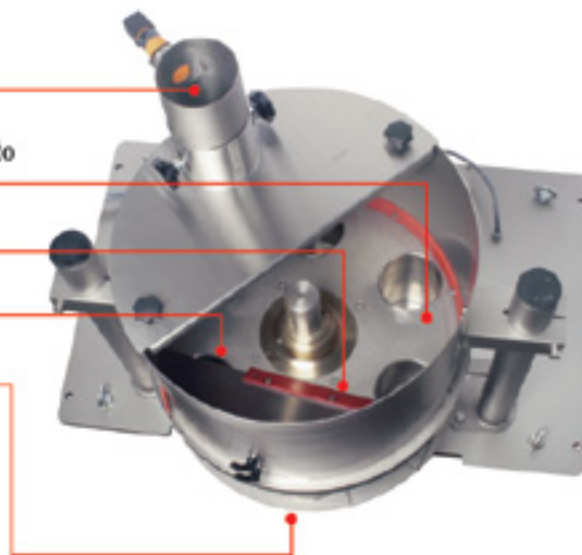
The product falls into the feed container.

The discharging plate transports the filled cup to the ejection position.

The wiper skims off any surplus product.

The empty cup is returned for filling.

The product falls into the transfer hopper.



The advantages

Volumetric filling technology has undergone a process of continuous improvement over the decades, so that today's components support a robust and reliable technology which operates almost maintenance and wear free. And, of course, it is easy and quick to clean. The VDD is the latest innovation in Rovema's cupfiller family. With its standard Stainless Steel Construction, the VDD is suitable for any application.

ROVEMA's volumetric filling system is tailored to the needs of the product. The design used for the loading hopper and the discharge cups are always specified and manufactured with regard to the

The dual purpose design—either as a continuous or intermittent volumetric filling unit—was conceived by taking account of the requirement for flexibility by many different customers.

By working with our customers we are continually developing our machines in line with production requirements. We utilize our experience to fill even the most difficult of products without malfunction and within very narrow fill tolerances.

The ROVEMA VDD can be used as a stand-alone unit, or combined with other machines as an integral part of ROVEMA systems technology.



Integrated systems

ROVEMA Packaging Machines L.P.
650 Hurricane Shoals Rd., NW
Lawrenceville, GA 30045
Phone: (770) 513-9604
Fax: (770) 513-0814
Email: sales@rovema.com
www.rovema.com



©2004 by Rovema