

# BVC 310 FRESH

Continuous Form Fill and Seal machine

*For high  
hygiene  
requirements  
and quick  
format changes*



## Compact packaging solution for fresh produce

- Up to 180 bags per minute
- Compact design with low overall height of 1,645 mm (65 in)
- Wash down version in stainless steel, electrical components in IP 65
- Sealed housing without cavities or flat surfaces
- Good accessibility for cleaning
- Optimum bag quality, high product protection for maximum shelf life

# ROVEMA BVC 310 Fresh Continuous Form Fill and Seal machine

## Versatility

- Processing of a wide variety of packaging materials possible, e.g. Mono and multilayer packaging materials as well as paper and paper composite packaging materials
- Processing of packaging materials of different thicknesses
- Available with industry-relevant options such as gas flushing, water injection, metal detector, UV-C disinfection, hinged control cabinet, air-conditioned control cabinet and much more.
- The high-speed BVC 310 Fresh is equipped with Sense & Seal product detection and our high-quality sealing technology, Premium Seal.

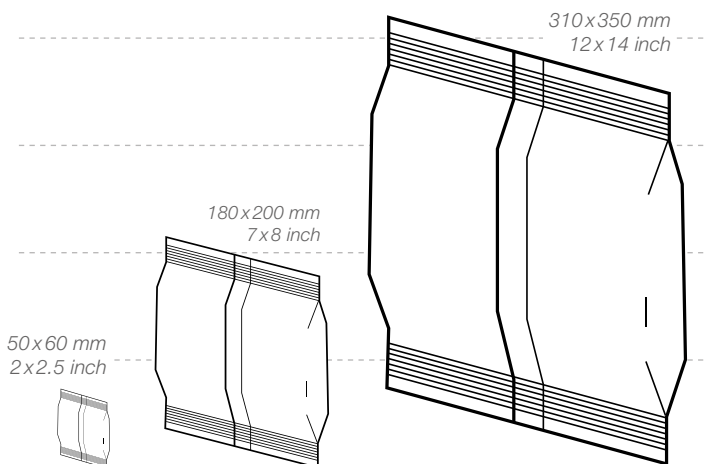


*The high-speed BVC 310 Fresh is equipped with Sense & Seal product detection and our high-quality sealing technology, Premium Seal.*



## Ease of operation

- Sophisticated machine design for maximum machine availability
- Wash-down applications; designed without horizontal surfaces
- Prepared for frequent packaging material and product changes, quick and easy cleaning
- With increased hygiene requirements
- Hose station
- Adjustable transition funnel
- Filling tube / format tube in special design with textured stainless steel sheet with waffle embossing
- Options to simplify format changes



*High pouch quality, quick and easy format changes*

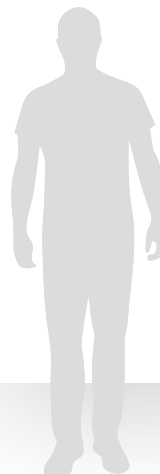
## Ease of use

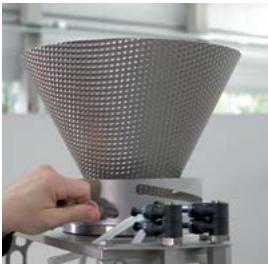
- Simple, safe operation of the machine
- Optimum accessibility for maintenance and cleaning work
- Multiple swing-open doors
- Highly customizable operator inputs, such as sealing time, sealing force, pouch length and set output via HMI
- User guidance with visual rendering in local language
- ECO mode saves energy during production interruptions
- High pouch quality, quick and easy format changes

## Technical data

Bag width	50–310 mm	2–12 in
Bag length	60–500 mm	2.5–19.5 in
Nominal output	up to 180 B/min.	
Sealing force	6000 N	

Subject to technical changes. Performance data depending on product and packaging material.





**Adjustable transition funnel**

**Hose station**  
for cleaning



**Easy format changeovers**

**Toolless change parts**  
for easy changeovers  
and cleaning



**Optional features:**

- OPC-UA interface for connection to the customer's control system
- Personalized login via RFID with rights management
- Barcode scanner for simplified recipe selection / packaging material scan
- Format setting via fixed stops, e.g. for rotary preset adjustment
- Interchangeable bars for cross sealing station
- Protective gas flushing
- Water injection
- Metal detector in pull-out carriage
- UV-C sterilization of the packaging material
- Swing-open control cabinet
- Swivel cross-seal jaws
- Swing-open front jaw carrier
- Air conditioning of machine housing and control cabinet
- Printer and labeler integrated into the film-reel carriage
- Printed content monitoring via eyesight
- Motorized spindle adjustment for printing unit/labeler
- Manual spindle cross adjustment for print mark reader and packaging material edge control
- Cutting and gluing table with safety knife, manual



Passion for packaging



#### ROVEMA Subsidiaries

ROVEMA France SAS  
93360 Neuilly-Plaisance  
info@rovema.fr

ROVEMA Benelux bv  
4906 AC Oosterhout  
sales@rovema.nl

ROVEMA Italia s.r.l.  
20026 Novate Milanese (MI)  
info@rovema-italia.it

ROVEMA Packaging Machines Ltd.  
Gatehouse Close/Aylesbury  
sales@rovema.co.uk

ROVEMA Spain and Portugal S.L.  
08208 Sabadell/Barcelona  
rovema@rovema.es

ROVEMA Makine San. Ve Tic. A.S.  
34870 Kartal/Istanbul  
info@rovema.com.tr

ROVEMA Polska Sp. z o.o.  
02-672 Warszawa  
rovema@rovema.pl

ROVEMA North America Inc.  
Norcross, GA 30093  
info@rovema-na.com

ROVEMA Latinoamérica S.A.  
Panama City  
rlainfo@rovema.com

ROVEMA Asia Pacific  
Corporation  
Makati City/Philippines  
info@rovema.com.ph

#### ROVEMA Headquarter

ROVEMA GmbH  
Industriestrasse 1  
35463 Fernwald, Germany  
Phone: +49 (0)641/409-0  
info@rovema.de  
www.rovema.com

#### Affiliates

DL Packaging  
www.dlpack.com

ROVEMA India Pvt Ltd.  
www.rovema-india.in



Sales partners and service centers worldwide

[www.rovema.com](http://www.rovema.com)